

Attenuation of LDH-A expression uncovers a link between glycolysis, mitochondrial physiology, and tumor maintenance

Valeria R. Fantin,^{1,3,4} Julie St-Pierre,^{2,3,5} and Philip Leder^{1,*}

¹Department of Genetics, Harvard Medical School and Howard Hughes Medical Institute, Boston, Massachusetts 02115

²Dana-Farber Cancer Institute and Department of Cell Biology, Harvard Medical School, Boston, Massachusetts 02115

³These authors contributed equally to this work.

⁴Present address: Merck & Co., Inc., Boston, Massachusetts 02115.

⁵Present address: Institut de Recherche en Immunologie et en Cancérologie (IRIC), Université de Montréal Pavillon Marcelle-Coutu, Montréal, Québec, Canada H3T 1J4.

*Correspondence: leder@genetics.med.harvard.edu

(Cancer Cell 9, 425–434; June 2006)

In this article, there is an error in the bottom panel of Figure 6A. On the pathology slide corresponding to the sample photographed, there were two bits of tissue of comparable size, one a tumor and another a lymph node. Inadvertently, the lymph node was photographed and used as the bottom control panel of Figure 6A. This error was identified by Dr. Mei Ling Chen, who suggested the possibility that the picture in question was that of a lymph node. Upon reexamination of the slide, we confirmed that this was indeed the case. We have now corrected Figure 6A with a new panel showing the tumor (Figure 1). This modification of the figure does not affect the findings or conclusion of the study.

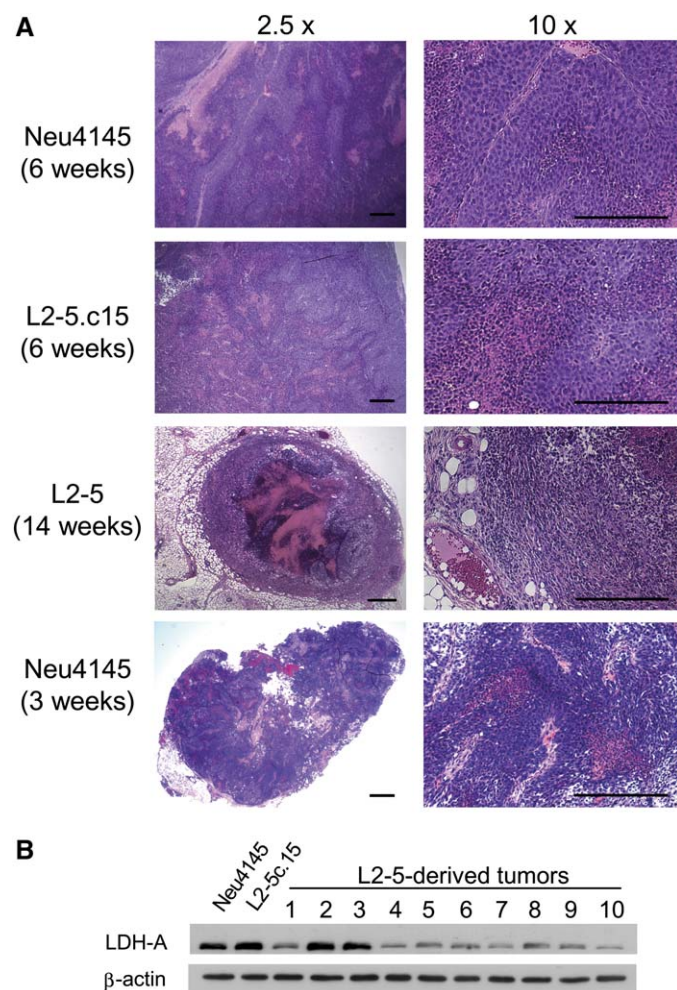


Figure 1. Corrected Figure 6

DOI: 10.1016/j.ccr.2006.07.011